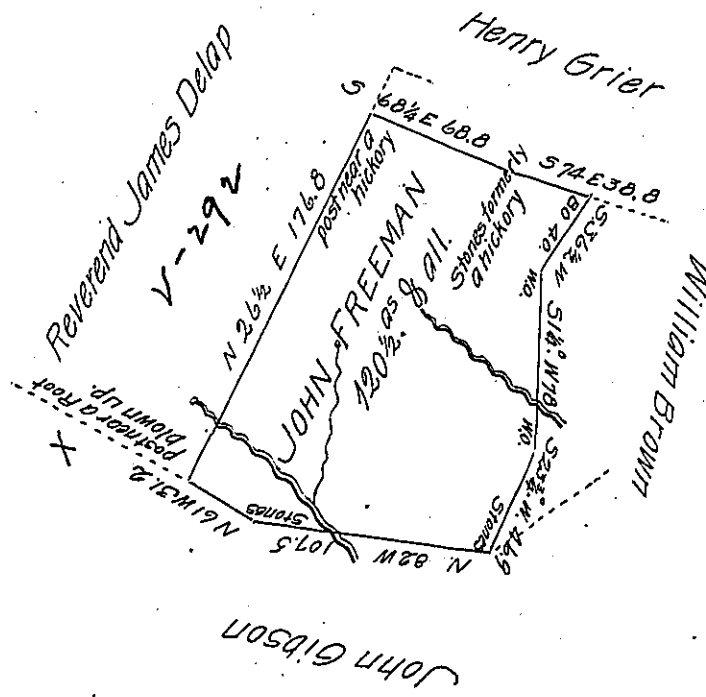


Note, this Survey has an excess occasioned by an Error of mine in making the estimate of Quantity previous to taking out the Warrant. The estimate was made by protraction and has proved to fall short of the Quantity—the land is circumscribed by actual Surveys. The State will receive no Injury by of consequence. Under these Circumstances I forward The Survey for your Instructions or acceptance as the owner is in haste to Patent it.

A McGlean

SC E 56.



Situate on the Waters of Redstone Creek in Marshall Township Fayette County and Surveyed the 9th day of September 1803 in pursuance of a Warrant dated the 18th day of February 1802.

To Samuel Cochran Esquire  
Surveyor General

P. Alexander McGlean Deputy

IN TESTIMONY that the above is a copy of the original remaining on file in the Department of Internal Affairs of Pennsylvania, made conformably to an Act of Assembly approved the 16th day of February, 1833, I have hereunto set my Hand and caused the Seal of said Department to be affixed at Harrisburg, this eleventh day of October 1904.

*Leaac D Brown*  
Secretary of Internal Affairs.